

# SUPPLIER DATA SHEET



## 1. IDENTIFICATION

Doc. Code: OSR080001

|                    |  |           |              |  |                 |
|--------------------|--|-----------|--------------|--|-----------------|
| Company Name       | Mercury Electronic Industrial Co., Ltd   |           | Brand        | MEC  |                 |
| Capital (USD)      | US\$7,657,000  |           | Chinese Name | 瑪居禮電波工業股份有限公司  |                 |
| Business Address   | 31, Ting Ping Rd., Shui-Fong Ind. Park, Shui-Fong, Taipei-Sian, Taiwan         |           | Year Started | 1973   |                 |
| TEL                | 886-2-2406-2779  |           | Post Code    | 224  |                 |
| e-mail             | <a href="mailto:sales-tw@mercury-crystal.com">sales-tw@mercury-crystal.com</a> |           | FAX          | 886-2-2496-0769  |                 |
| Representative     | Vicky Chou   |           | WEB site     | <a href="http://www.mercury-crystal.com">www.mercury-crystal.com</a> |                 |
| Total Asset        | US\$12,895,745   |           | Chairman     | Edward Yen   |                 |
| Employees          | 350  | Engineer  | 35           | Sales Amount   | 15 million USD  |
| Premises (Factory) |  | Listed on | Listed       | Legal Status   | Limited Company |
| Person in Charge   | Ason Yen   | Section   |              | TEL/ E-mail  |                 |

## 2. INFORMATION OF FACTORY

|                         |  |                                       |             |                       |             |                |      |
|-------------------------|--|---------------------------------------|-------------|-----------------------|-------------|----------------|------|
| Import/ Export License  | 1. Yes   | 2. No                                 | 1           | Import/ Export Rights | 1. OWN      | 2. Outsourcing | 1    |
| QMS Certification ID    | ISO9001  | QS9000                                | TS16949     | EMS Certification ID  | ISO14000    | Sony GP        | RoHS |
|                         | ID:70016169  |                                       |             |                       |             |                |      |
| Safety Certification ID | UL (US)  | GA (EU)                               | PSE(JPN)    |                       |             |                |      |
|                         |  |                                       |             |                       |             |                |      |
| Product Capacity        | Brand  | Item                                  |             | Quantities            |             |                |      |
|                         | Original Brand   | SMD 5x7 mm crystals / oscillators     |             | 2 millions            |             |                |      |
|                         |  | SMD 5x3.2 mm crystal / oscillators    |             | 2 millions            |             |                |      |
|                         |  | SMD 3.2x2.5 mm Crystals / Oscillators |             | 3 millions            |             |                |      |
|                         |  | TCXO / VCTCXO                         |             | 300K                  |             |                |      |
|                         | VCXO   |                                       | 500K        |                       |             |                |      |
|                         | OEM/ODM Brand  |                                       |             |                       |             |                |      |
|                         |  |                                       |             |                       |             |                |      |
|                         |  |                                       |             |                       |             |                |      |
| Major Customer          | Customer   |                                       | Application | Item                  |             |                |      |
|                         | 1  | Nera Electronics                      |             | Satallite Com.        | VCXO        |                |      |
|                         | 2  | Motorola                              |             | Tel. Com.             | VCXO / TCXO |                |      |
|                         | 3  | British Telcom                        |             | Tel. Com.             | Osc. / VCXO |                |      |
|                         | 4  | USI                                   |             | Wireless              | Osc.        |                |      |
| 5                       | Maconi   |                                       | Intrument   | TCXO / VCXO           |             |                |      |
| Major Supplier          | Supplier   |                                       | Material    | Location              |             |                |      |
|                         | 1  | Kyocera                               |             | Ceramic package       | Japan       |                |      |
|                         | 2  |                                       |             |                       |             |                |      |
|                         | 3  |                                       |             |                       |             |                |      |
|                         | 4  |                                       |             |                       |             |                |      |
| Strong Technology       | Quality  |                                       |             | Cost                  |             |                |      |
|                         | High frequency / High performance crystals and oscillators |                                       |             |                       |             |                |      |

# SUPPLIER DATA SHEET

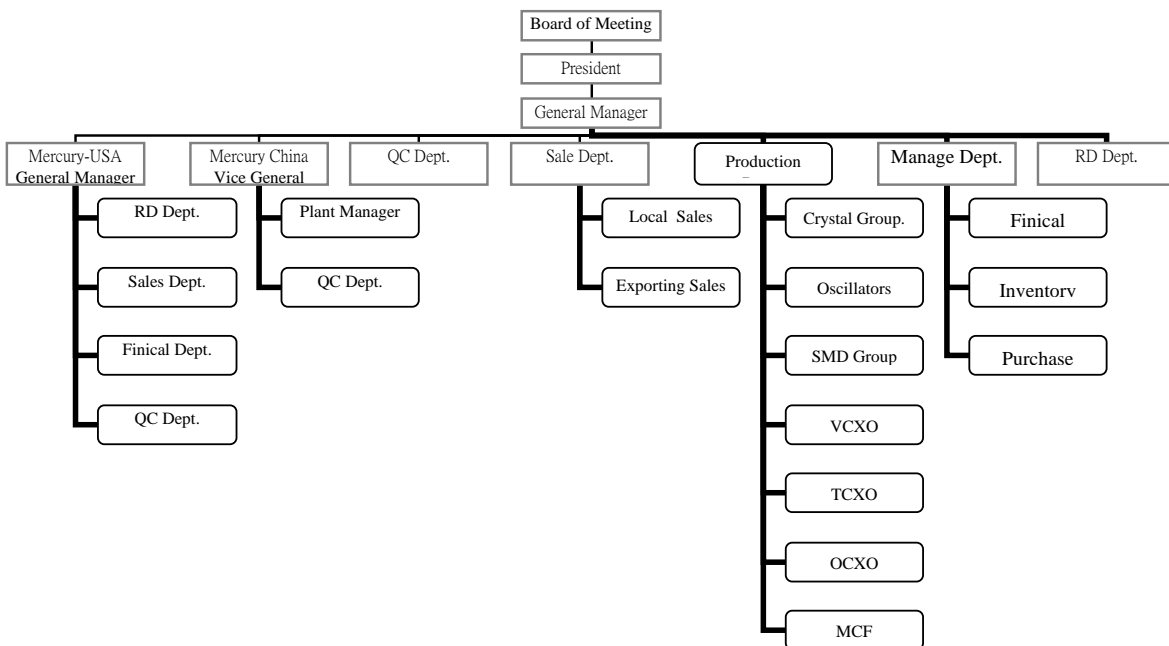


## 2. INFORMATION OF FACTORY

Doc. Code: OSR080001

| Equipment        | Production   |  |             | Inspection |   |           |         |
|------------------|--------------|--|-------------|------------|---|-----------|---------|
|                  |              | in line final turning equipment, in line testing equipment |             |            | Saunders, 350D, 280B, 920SA, HP network analyser, |           |         |
| Factory Location | Factory      | Country  | Region      | Travel     | Via   | Travel by | Time    |
|                  | Taiwan plant | Taiwan   | Taipei Sian |            | Taipei  | Car       | 30 min. |
|                  | China plant  | China  | Jiang Su    |            | Shang Hai   | Car       | 2 hours |
|                  | US plant     | US   | LA          |            | LA  | Car       | 1 hour  |
|                  |              |  |             |            |   |           |         |
|                  |              |  |             |            |   |           |         |

## 3. Organization



## 4. INFORMATION OF QUALITY

Appendix. 1 QC FLOW CHART



Appendix. 2 Quality Policy