

SUPPLIER DATA SHEET



1. IDENTIFICATION

Doc. Code: OSR080001

| | | | | | |
|--------------------|--|-----------|---------------------------|--------------|--|
| Company Name | APEX SCIENCE&ENGINEERING CORP | | | Brand | |
| | | | | Chinese Name | 韋典科技開發股份有限公司 |
| Capital (USD) | 60M (USD) | | | Year Started | 1976 |
| Business Address | 4f, No 112, Shin-Min St, Chungho City,235 Taiwan | | | Post Code | 235 |
| TEL | +886 2 22287331 | | | FAX | +886 2 22259169 |
| e-mail | Jewel@apexgroup.com.tw | | | WEB site | www.apexgroup.com.tw |
| Representative | Jewel Huang | | | Chairman | Gary Kuo |
| Total Asset | 60M (USD) | | | Sales Amount | |
| Employees | 1,200 | Engineer | | Legal Status | Limited Company |
| Premises (Factory) | | Listed on | public listed on TSE (TW) | | |
| Person in Charge | Jewel Huang | Section | Sales | TEL/ E-mail | +886 2 22287331 |

2. INFORMATION OF FACTORY

| | | | | | | | |
|-------------------------|----------------|--|---------------------------------|-----------------------|------------------------------|----------------|---------------|
| Import/ Export License | 1. Yes | 2. No | 1 | Import/ Export Rights | 1. OWN | 2. Outsourcing | 1 |
| QMS Certification ID | ISO9001 | QS9000 | TS16949 | EMS Certification ID | ISO14001 | Sony GP | RoHS |
| | FM 511386 | | | | EMS 511387 | | CE/2008/A7009 |
| Safety Certification ID | UL (US) | GA (EU) | PSE(JPN) | | | | |
| | | | | | | | |
| Product Capacity | Brand | Item | | Quantities | | | |
| | Original Brand | SMD Mono: 150, 170/172, 190/192/194 ; Top View Bi-color / Tri-color; SideView Mono: 110/260 Bi-color / Tri-color | | 60kkpcs | Pcs. / month | | |
| | | Lamp: 5mm, 3mm, oval | | 10kkpcs | | | |
| | OEM/ODM Brand | | | | | | |
| | | | | | | | |
| | | | | | | | |
| | | | | | | | |
| Major Customer | Customer | Application | | Item | | | |
| | 1 | Braun | Shaver | | RY-SP150DNB74 | | |
| | 2 | Toshiba | Office Appliance (Copier) | | RY-SP350UHR24 | | |
| | 3 | Panasonic | Office Appliance (System Phone) | | RY-SP190UHR24, RY-SP110UYG24 | | |
| | 4 | Sanyo | Charger | | RY-SP192USD84 | | |
| 5 | Foxxcon | EMS (Project) | | RY-SP190YG34 | | | |
| Major Supplier | Supplier | Material | | Location | | | |
| | 1 | Sumitomo bank | Silver Paste | | JP | | |
| | 2 | Nitton Denko | Epoxy | | JP | | |
| | 3 | 賽門 | PCB | | TW | | |
| | 4 | Epitech | Chips | | TW | | |
| 5 | Sumitomo | Gold Wire | | JP | | | |
| | Quality | | | | Cost | | |

| | | |
|-------------------|--|--|
| Strong Technology | | |
|-------------------|--|--|

SUPPLIER DATA SHEET



2. INFORMATION OF FACTORY

Doc. Code: OSR080001

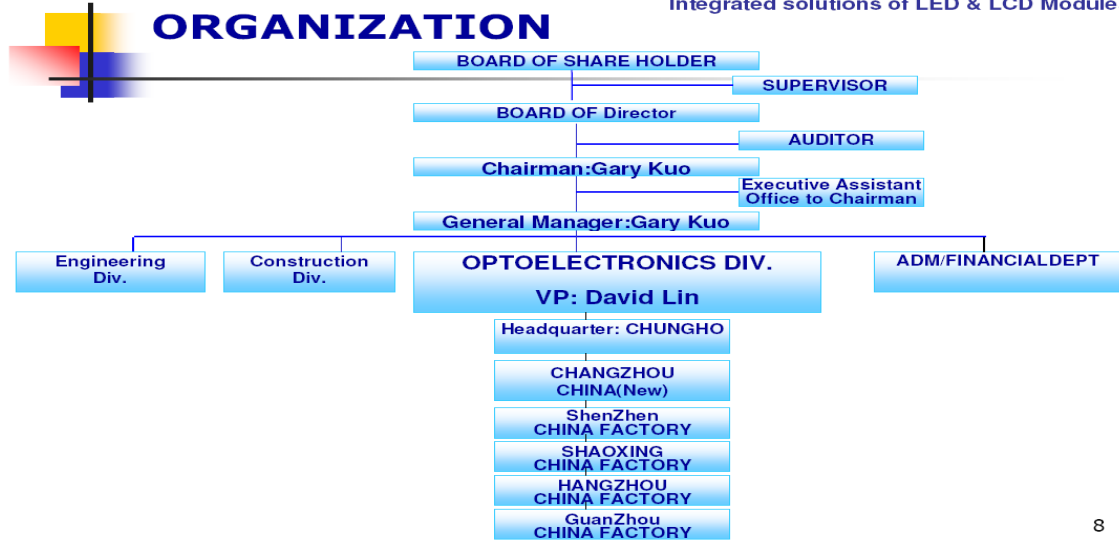
| Equipment | Production | | | Inspection | | | | |
|------------------|------------|---------|---------|------------|---------|-----------|------|--|
| | N/A | | | | | | | |
| Factory Location | Factory | Country | Region | Travel | Via | Travel by | Time | |
| | Changzhou | China | ZhangSu | | NanJing | Car | 1.5H | |
| | | | | | | | | |
| | | | | | | | | |

3. Organization



峯典科技開發股份有限公司
 APEX SCIENCE&ENGINEERING CORP.

Integrated solutions of LED & LCD Modules



Appendix. 1 QC FLOW CHART

Chip-LED QC 工程图

| 編號 | 作業制程名稱 | 管制項目 | 管制項目編號 | 管制作業標準 | 管制作業標準編號 | 檢驗量測方法及記錄表 | 檢驗量測方法及記錄表編號 | 檢驗週期 | 負責人 | 備註 |
|----|---------|-----------|-----------------|-----------|----------|------------|-------------------|---------|------|----|
| 1 | ↓ 進料 | 進料檢驗標準 | SQA3QC021~026A0 | 進料檢驗與識別程式 | QP015 | 進料檢驗報告表 | SQA4021~SQA4026A0 | 1次/每批 | IQC | |
| 2 | ↓ 固晶 | 固晶站制程檢驗標準 | SQA3QC041A0 | 制程檢驗與識別程式 | QP016 | 固晶站QC檢驗表 | SQA4041A0 | 6片/每2小時 | IPQC | |
| 3 | ↓ 焊線 | 焊線站制程檢驗標準 | SQA3QC091A0 | 制程檢驗與識別程式 | QP016 | 焊線站QC檢驗表 | SQA4091A0 | 6片/每2小時 | IPQC | |

| | | | | | | | | | | |
|----|-----------|-------------|-----------------|-----------|---------|------------|-----------|---------|------|--|
| 3 | ↓ 焊線 | 焊線站制程檢驗標準 | SQA3QC091A0 | 制程檢驗與識別程式 | QP016 | 焊線站QC檢驗表 | SQA4091A0 | 6片/每2小時 | IPQC | |
| 4 | ↓ 壓模 | 壓模站制程檢驗標準 | SQA3QC121A0 | 制程檢驗與識別程式 | QP016 | 壓模站QC檢驗表 | SQA4121A0 | 6片/每2小時 | IPQC | |
| 5 | ↓ 切割 | 切割站制程檢驗標準 | SQA3QC161A0 | 制程檢驗與識別程式 | QP016 | 切割站QC檢驗表 | SQA4161A0 | 6片/每2小時 | IPQC | |
| 6 | ↓ 測試分光 | 測試分光站制程檢驗標準 | SQA3QC191A0 | 制程檢驗與識別程式 | QP016 | 測試分光站QC檢驗表 | SQA4191A0 | 1次/每3小時 | IPQC | |
| 7 | ↓ 信賴測試 | 產品信賴作業標準 | SQA3QC281~287A0 | 信賴性作業標準 | 信賴性作業標準 | 信賴性試驗報告表 | SEG4001A0 | 1次/新規格 | IPQC | |
| 8 | ↓ 包裝 | 包裝制程檢驗標準 | SQA3QC221A0 | 制程檢驗與識別程式 | QP016 | 包裝站QC檢驗表 | SQA421A0 | 1次/每2小時 | IPQC | |
| 9 | ↓ 成品入庫 | 成品檢驗規範 | SQA3QC261A0 | 制程檢驗與識別程式 | QP016 | 包裝站QC檢驗表 | SQA421A0 | 1次/每批 | FQC | |
| 10 | ↓ 出貨 | 出貨檢驗單 | SPC4335A0 | 制程檢驗與識別程式 | QP016 | 出貨檢驗報告表 | SQA4261A0 | 1次/每批 | OQC | |

Appendix. 2 Quality Policy