

	Quality	Cost
Strong Technology	※Production Efficiency 2 days work and 2 days off, 12 hours per shift – 24 hours producing ※Instant information – all the process data have been computerized. Could trace back to material lot by final lot no. ※R&D Ability Specializing in the production of Multilayer Bead / Inductor makes a complete product lineup and flexible Customized Production.To meet customer's requirement, Max Echo's professional machinery team can work in-house machinery development. ※Automotive applied Max Echo implement with preventive based quality system (TS16949). All series product with AEC-Q200.	

SUPPLIER DATA SHEET

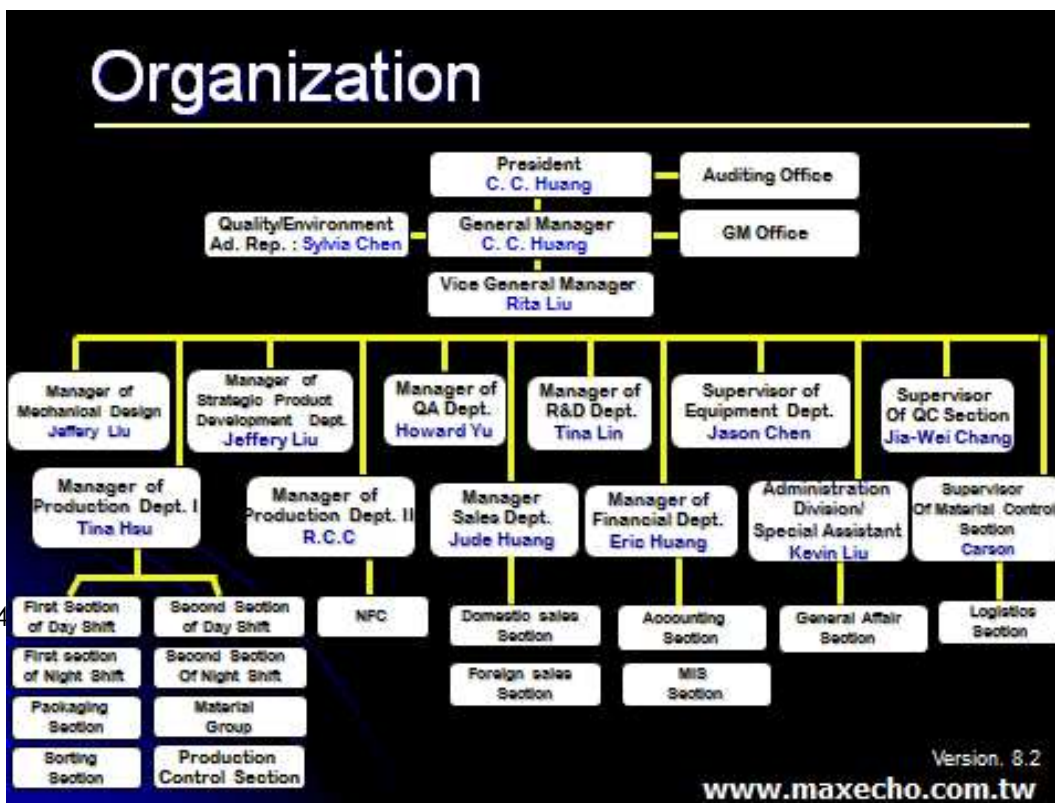


2. INFORMATION OF FACTORY

Doc. Code: OSR080001

	Production	Inspection						
Equipment	1) Printing Machine 2) Dicing Machine 3) Sorting Machine 4) Taping Machine	1) HP4286A: 1MHZ-1GHZ RF LCR METER 2) HP4291A: 1MHZ-1.8GHZ RF IMPECANCE/MATERIAL ANALYZER 3) AGILENT4287A: 1MHZ-1GHZ RF LCR METER 4) AGILENT4338B: MILLIOHMMETER 5) HP4338A: MILLIOHMMETER						
Factory Location	Factory	Country	Region	Travel	Via	Travel by	Time	
	Taichung	Taiwan	Taiwan		Taichung ST	CAR	0.15H	

3. Organization



弊社の経営理念は、 “卓越性を追求、そして、顧客第一”

弊社は、従業員福祉や、教育訓練を重視し、社員が働きながら、成長していくことを、目指しております。そして、顧客第一の信念で、優秀な社員たちは、顧客の皆様に、最高のサービスを提供します。